



Sunshine Family News

DECEMBER 2007

Things are getting into full swing around here. We have a lot of activities planned for your enjoyment. Join us at Coffee Hour on Wednesdays at 8:30 a.m. It's a good way to keep up on what's going on (as well as getting to know your neighbors). Everyday we see more of our friends return from the north as well as many new faces.



*On behalf of the owners and the staff we'd like to wish everyone a very **Merry Christmas**.*

The Sunshine Team

SUNSHINE TEAM

Office Personnel

Mary Beth Humes
Deb Polhamus
Louise Weaver

Maintenance

Jim Angevine
Craig Polhamus
Bob Welsh
Richard Williams

Activities

Debbie Duncan
Judy Smith
Linda Westergard

Camp Hosts

John & Betty Fields
Lot # 52
Jerry & Joyce Keiser
Lot # 25
Morgan & Patti Reese
Lot # 5

Pastor

Wayne Godwin

OFFICE HOURS:

Mon.-Sat. 9-5
Sunday—Closed
To be with family.

Sunshine RV Resort
303 SR 70 East
Lake Placid, FL 33852
863-465-4815

UPCOMING 2007—2008 TRIPS

Wagon Wheel Flea Market—Pinellas Park—**Saturday, January 12**—Cost \$20.00 Cost is for transportation only. Leave at 8:00 a.m.—return approximately 6:00 p.m. Checks or money orders **only** made payable to **Sunburst Tours**. Deadline: **Friday, January 4th**.

Palm Beach Princess Casino Cruise—West Palm—**Monday, January 21**—Cost \$44.00 includes transportation, cruise and buffet. Leave at 7:30 a.m.—return approximately 7:00 p.m. Checks or money orders **only** made payable to **Sunburst Tours**. Bring photo ID. Deadline: **Friday, January 11th**.

Key West & Everglades—Sunday, February 10—**Tuesday, February 12**—Cost \$149.00 per person (double occupancy). Cost includes transportation, 2 nights hotel, 2 continental breakfasts, Sawgrass Mills Mall, airboat ride, alligator show, tour Florida Keys, Mallory Square Sunset Celebration. Checks or money orders **only** made payable to **Vision Travel**. Deadline: **Monday, January 21st**.

Sugar Cane/Citrus Tour—Clewiston—**Tuesday, February 19**—Cost \$44.00 includes transportation, tour, & buffet at the Clewiston Inn. Leave at 8:00 a.m.—return approximately 4:30 p.m. Checks or money orders **only** made payable to **Sunburst Tours**. Deadline: **Friday, February 9th**.

Strawberry Festival—Plant City—**DATE TO BE ANNOUNCED**—Cost \$20.00 is for transportation only. Checks or money orders **only** made payable to **Sunburst Tours**.

We encourage you to sign up early for trips so you won't be left behind. Sign-up in the office from 10-2 Monday—Saturday or at Coffee Hour on Wednesday mornings.

MANAGEMENT & OFFICE CORNER

PHOTO COPIES/FAXES

There will be a charge for all copies (this includes copies for crafts, sports, as well as residents) made by the office and faxes received or sent as follows:

Copies:

10 ¢ a copy

15 ¢ for both sides

Faxes Received & Sent:

\$1.50 for first 5 pages

10¢ for each additional page

SPEED LIMIT

The speed limit in the park is **10 MPH**. Please adhere to this speed limit. There have been several close calls. Many people have been observed exceeding the speed limit. If you don't slow down the owners will be forced to put in speed bumps. Also, make sure you have lights on your golf carts or bicycles when riding at night. Walkers should face the traffic when walking and stay to the left side of the road. Your cooperation is greatly appreciated.

TELEPHONE BOOKS

The new phone books are in the Library. Please stop by and pick them up. There is a tote in the library for your old books. Marie & David Alden have volunteered to take the books to the High School for recycling.

RESIDENT DIRECTORIES

If your address, phone or cell number has changed, please give Mary Beth the correction. Also, if you would like your e-mail address listed in the directory please let her know. She is hoping to have the new directories ready by the middle of January. A big thank you to Luella Dye & Mary Beth Humes for donating their time so we can keep up with our friends and neighbors.

ANGEL TREE

We will be participating in the Salvation Army's Angel Tree Program again this year. You may "adopt" an Angel from the tree and provide an unwrapped gift for your Angel. You will have the satisfaction of knowing you have put a smile on a needy child's face at Christmas. The deadline for returning gifts to the Office is **Thursday, December 13th**. Thank you for your generosity.

VEHICLES, GOLF CARTS, BOATS

Let's be a good neighbor. If you have been storing your vehicles, golf carts, boats, etc. at your neighbors, it's time to put them on your site. Many of the residents are returning to the park. Make sure they can pull onto their site upon arrival.

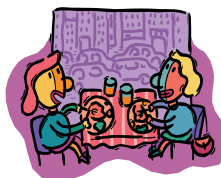
Stop in the Office if you need a sticker for your vehicle, RV, boat, and/or trailer.

ACTIVITIES



PANCAKE BREAKFAST

We are looking for a volunteer to take over being in charge of the pancake breakfast. Ken & Myrna Appleby and Diane Ormesher have decided to hang-up their aprons after many years of providing us with a terrific pancake breakfast. We sincerely thank them for all they have done. If you are interested in volunteering or need more information, please talk to Judy Smith or Linda Westergard.



MINI POT LUCK

The luncheon is at noon on Thursday, December 6th. This is a pot luck on the lite side. Bring a dish to pass and your own place setting. Beverages will be provided. Join in on the fellowship and good food. Men, this is not just for the ladies. All are welcome. Thanks to Dave & Marie Alden for volunteering to head up the Mini Pot Lucks.



BLUEGRASS TRAVELERS

Wednesday, December 19th
7:00 p.m.

In The Club House

DONATIONS

BLOOD DRIVE

Thursday, December 20th
8:30 a.m. - 1:00 p.m.

If you haven't donated in the past, please think about donating now. There is always a big demand for blood around the holidays. Sign-up in the Club House in advance to donate.

HOE-DOWN

With Earl Welch

Saturday, December 22nd
7:00 p.m.

Plan on attending whether you're there for the dancing or to just enjoy the music and watch. It's good exercise and great fun.

Donations Accepted

RED HATS

Red Hats Luncheon is on Wednesday, December 19th, at noon in the Club House. Bring 2 1/2 dozen of your favorite homemade cookies for the cookie exchange, a wrapped white elephant gift, and a wrapped grab bag gift (cost to not exceed \$2.00). There will be a \$1.00 charge for lunch collected at the door. Sign-up in the back of the Club House by **Friday, December 14th**.

Mark you calendar for the upcoming dates:

January 16—Box Lunch

February 4—Marti Gras Pizza Party

March 5—Red Hat's 10th Birthday Party

April ? (date to be determined) - Myaaka State River Park

Due the cost of photocopying, there will not be a Red Hat Newsletter. Please check the Sunshine Newsletter monthly for upcoming news and events. There will be a sign-up sheet in the Club House prior to each event. Charolette needs your reservation and payment (\$18.00) for the birthday party (March 5) by **December 19th**.

HOLIDAY ACTIVITIES



TRIM THE TREE & DECORATE

On Friday, December 14th, at 10:00 a.m. we will be decorating the Club House and trimming the tree. Your help is needed. This is always a fun time and a good chance to socialize with your neighbors or the new residents. Bring a plate of your favorite cookies or a snack to share. Beverages will be provided.

CHRISTMAS DANCE

Saturday, December 15th
8–11 p.m.
\$5.00

Music by Steve Baker

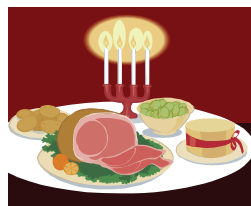
Bring your own snacks & beverages. Coffee and ice tea will be provided. Purchase your tickets in the Office from 10-2 Monday—Saturday or at Coffee Hour on Wednesday mornings.

BIKE/CART PARADE

Decorate your bicycle or golf cart for the holidays. Meet at the Club House on Tuesday, December 18th, at 2:00 p.m. We'll have a great time as we parade through the park. It's always a good time.

CHRISTMAS CAROLS

Join us in the Club House on **Monday, December 24th, at 7:00 p.m.** for Christmas carols and fellowship. Bring a dish of cookies to share. Beverages will be provided. Afterwards, plan on joining us in some old fashion caroling. The residents that are homebound really enjoy us stopping by and singing a couple of carols.



CHRISTMAS DINNER

Tuesday, December 25th
1:00 p.m.
In The Club House
\$1.50 (tickets must be purchased by Friday, December 21)

NEW YEARS EVE DANCE

Monday, December 31st
8:30—12:30
\$11.00

Check the flyer for details.

Bring a dish to pass and your own place setting. Meat, beverages and rolls will be provided.

DAILY ACTIVITIES

MONDAYS

8:00 a.m. Cardio Blast
9:00 a.m. Horseshoes
9:30 a.m. Pool Exercise
9:30 a.m. Petongue
10:00 a.m. Line Dancing
11:00 a.m. Signing
1:00 p.m. Bowling
1:00 p.m. Quilting - Club House
6:45 p.m. Bingo

TUESDAYS

8:00 a.m. Tai Chi
9:00 a.m. Horseshoes
9:30 a.m. Pool Exercise
9:00 a.m. Crafts
9:30 a.m. Bocci
11:30 a.m. Hot Dogs
11:30 a.m. Golf
2:00 p.m. Singles
7:00 p.m. Bible Study-1st&3rd Tues
Gospel Sing-2nd&4th Tues
7:00 p.m. Euchre

WEDNESDAYS

7:45 a.m. Blood Pressure Check
2nd & 4th in small Rec Hall
8:30 a.m. Donuts and Coffee
9:00 a.m. Horseshoes
9:30 a.m. Pool Exercise
10 minutes after coffee - Rosary
9:30 a.m. Belly Dancing
1:00 p.m. Hoe-Down
7:00 p.m. Game Night

THURSDAYS

8:00 a.m. NIA (martial arts & dance)
9:00 a.m. Horseshoes
9:00 a.m. Crafts
9:30 a.m. Pool Exercise
9:30 a.m. Shuffle Board
1:00 p.m. Beginner Bridge
1:00 p.m. Shuffle Board
2:00 p.m. Choir Practice
7:00 p.m. Square Dance

FRIDAYS

8:00 a.m. Belly Dancing
8:00 a.m. Women's Exercise (Rec Hall)
9:00 a.m. Horseshoes
9:00 a.m. Pool Exercise
9:00 a.m. Petongue
9:30 a.m. Square Dance Lessons
6:45 p.m. Bingo

SATURDAYS

9:00 a.m. Horseshoes

SUNDAYS

9:00 a.m. Church

Please check in the Office to see when the function is starting.... Thanks!!!

In Addition:

LINE DANCING

Line dancing is back by popular demand on Mondays at 10:00 a.m. in the Club House beginning **January 7th**. Charolette Zoscak has agreed to lead the group and give instructions. We understand that there are several wishing to attend but have a conflict. This was the only time Char was able to do it. Hopefully, you'll be able to adjust your schedule so you can attend these classes.

